



Enjoy More Flexibility,  
Customized Products,  
and Tailor-Made Services

# COMFORT MOTION





# 99%

of TiMOTION's customer application requirements can be solved by our experienced personnel providing highly customized solutions.

# 101%

TiMOTION guarantees complete customer satisfaction by providing competitive actuation solutions, coupled with a wide range of high-quality products, global service networks, and "on-demand" R&D resources.

# Linear Actuators

## TA series



### TA4

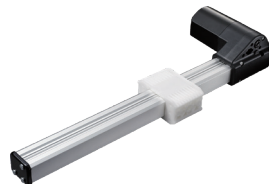


**Max. load**  
3,500N (push)  
2,000N (pull)

**Max. speed at max. load**  
3.1mm/s

**Max. speed at no load**  
36.9mm/s

**Retracted length**  
≥ Stroke + 140mm



### TA5P



**Max. load**  
6,000N (push)  
3,000N (pull)

**Max. speed at max. load**  
4.1mm/s

**Max. speed at no load**  
58mm/s

**Retracted length**  
≥ 157mm



### TA6

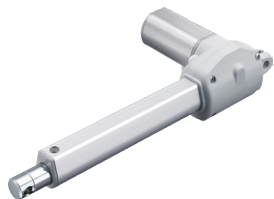


**Max. load**  
6,000N (push)  
4,000N (pull)

**Max. speed at max. load**  
5mm/s

**Max. speed at no load**  
43mm/s

**Retracted length**  
≥ Stroke + 163mm



## TA9



**Max. load**

2,500N (push)  
1,000N (pull)

**Max. speed at max. load**

5.1mm/s

**Max. speed at no load**

58.3mm/s

**Retracted length**

≥ Stroke + 140mm



## TA14



**Max. load**

6,000N (push)  
4,000N (pull)

**Max. speed at max. load**

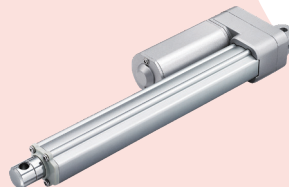
4.1mm/s

**Max. speed at no load**

39mm/s

**Retracted length**

≥ Stroke + 163mm



## TA16



**Max. load**

4,500N (push)  
2,500N (pull)

**Max. speed at max. load**

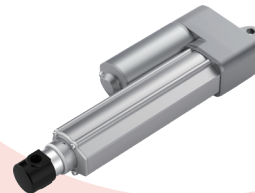
4.9mm/s

**Max. speed at no load**

56.5mm/s

**Retracted length**

≥ Stroke + 112mm



## TA19



**Max. load**

1,000N (push)

**Max. speed at max. load**

18mm/s

**Max. speed at no load**

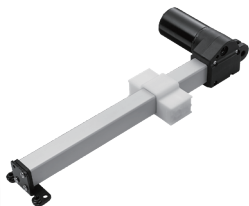
64mm/s

**Retracted length**

≥ Stroke/2 + 165mm

# Linear Actuators

## TA series



### TA25



**Max. load**  
1,000N (push/pull)

**Max. speed at max. load**  
29mm/s

**Max. speed at no load**  
54mm/s

**Retracted length**  
≥ 99mm



### TA26



**Max. load**  
4,000N (push)  
2,000N (pull)

**Max. speed at max. load**  
6.1mm/s

**Max. speed at no load**  
24mm/s

**Retracted length**  
≥ Stroke + 120mm



### TA32



**Max. load**  
500N (push)

**Max. speed at max. load**  
4.8mm/s

**Max. speed at no load**  
16mm/s

**Retracted length**  
≥ 143mm



## TA38M

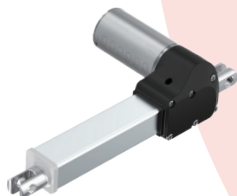


**Max. load**  
2,000N (push)  
1,500N (pull)

**Max. speed at max. load**  
6.2mm/s

**Max. speed at no load**  
20mm/s

**Retracted length**  
≥ 160mm (depending on  
chosen options)



## TA42

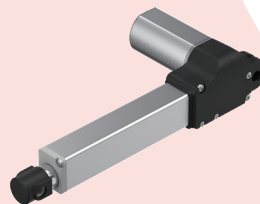


**Max. load**  
1,500N (push/pull)

**Max. speed at max. load**  
6.2mm/s

**Max. speed at no load**  
13.2mm/s

**Retracted length**  
≥ Stroke + 100mm



## TA43



**Max. load**  
4,000N (push/pull)

**Max. speed at max. load**  
2.5mm/s

**Max. speed at no load**  
12.1mm/s

**Retracted length**  
≥ Stroke + 100mm

# Lifting Columns

## TL series



### TL3



**Max. load**  
4,000N (push)

**Self-locking force**  
4,000N

**Max. dynamic bending moment**  
1,000Nm

**Max. speed at max. load**  
13.7mm/s

**Max. speed at no load**  
39mm/s

**Retracted length**  
 $\geq \text{Stroke}/2 + 150\text{mm}$



### TL17



**Max. load**  
2,000N (push)

**Max. dynamic bending moment**  
250Nm

**Max. speed at max. load**  
11.5mm/s

**Max. speed at no load**  
41mm/s

**Retracted length**  
 $\geq \text{Stroke}/2 + 150\text{mm}$



### TL18



**Max. load**  
4,500N (push)

**Self-locking force**  
4,500N

**Max. dynamic bending moment**  
250Nm

**Max. speed at max. load**  
6.6mm/s

**Max. speed at no load**  
45mm/s

**Retracted length**  
 $\geq \text{Stroke} + 147\text{mm}$





## TL18AC



**Max. load**  
4,500N (push)

**Self-locking force**  
4,500N

**Max. dynamic bending moment**  
250Nm

**Max. speed at max. load**  
6.6mm/s

**Max. speed at no load**  
45mm/s

**Retracted length**  
≥ 383mm



## TL25



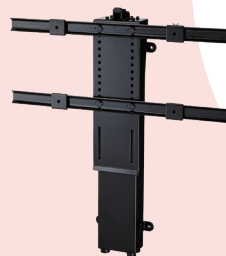
**Max. load**  
1,500N (push)

**Max. dynamic bending moment**  
130.5Nm

**Max. speed at max. load**  
15mm/s

**Max. speed at no load**  
108mm/s

**Retracted length**  
Stroke + 360mm



## TVL3



**Max. load**  
600N (push)

**Max. speed at max. load**  
22mm/s

**Max. speed at no load**  
32mm/s

**Retracted length**  
570mm



# Control Boxes



## TC2B Series

- Number of motors: 1~3
- Max. output: 32V DC, 6.25A



## TC6 Series

- Number of motors: 1~5



## TC7 Series

- Number of motors: 1~2



## TC11 Series

- Number of motors: 1
- Max. output: 32V DC, 6A

# Control Boxes



## TC11P Series

- Number of motors: 1
- Max. output: 32V DC, 6A



## TC14 Series

- Number of motors: 1~4



## TC15 Series

- Number of motors: 2
- Max. output: 32V DC, 10A



## TC16 Series

- Number of motors: 3
- Max. output: 32V DC, 10A



### **TC16P Series**

- Number of motors: 3
- Max. output: 32V DC, 10A



### **TC23 Series**

- Number of motors: 1~4
- Max. output: 24V DC, 5A



# Back-Up Power



## **TBB2 Series**

- Battery type: Lead acid, Lithium
- Capacity: 1.2Ah
- Discharging voltage: 24V DC, 1.2A



## **TBB3 Series**

- Battery type: Lithium-ion
- Capacity: 1.8Ah
- Discharging voltage: 25.2V DC, 1.8A



## **TBB4 Series**

- Battery type: Lead acid
- Capacity: 1.2 or 2.2Ah
- Discharging voltage: 24V DC, 2A



## **TBB5 Series**

- Battery type: Lithium iron
- Capacity: 4Ah
- Discharging voltage: 24V DC, 4A



### **TBB6 Series**

- Battery type: Lead acid
- Capacity: 2.9 or 5Ah
- Discharging voltage: 24V DC, 2.9/5A



### **TBB7 Series**

- Battery type: Lead acid, Lithium
- Capacity: 2.9/5Ah (Lead acid); 2.5/4.5/10Ah (Lithium)
- Discharging voltage: 24V DC, 2.9/5A



### **TBB8 Series**

- Battery type: Lithium
- Capacity: 1.5Ah
- Discharging voltage: 24V DC, 1.5A



# Power Supplies



## TP2 Series

- Transformer type: SMPS
- Input voltage: 100~240V AC
- Max. output: 29V DC, 6.25A



## TP2N Series

- Transformer type: SMPS
- Input voltage: 100~240V AC
- Max. output: 29V DC, 6.25A



## TP2P Series

- Transformer type: SMPS
- Input voltage: 100~240V AC
- Max. output: 29V DC, 6.25A



## TP2S Series

- Transformer type: SMPS
- Input voltage: 100~240V AC
- Max. output: 29V DC, 6A





#### **TP5P Series**

- Transformer type: SMPS
- Input voltage: 100~240V AC
- Max. output: 29V DC, 5A



#### **TP7 Series**

- Transformer type: SMPS
- Input voltage: 100~240V AC
- Max. output: 29V DC, 3.75A



#### **TP11 Series**

- Transformer type: SMPS
- Input voltage: 100~240V AC
- Max. output: 29V DC, 5A



# Hand Controls



TH1



TH3



TH4



TH5



TH6



TH7



TH7R



TH8



TH9



TH11



TH13



TH15



TH16



TH17



TH19



TH23

# Hand Controls



TH25



TFH2



TFH3



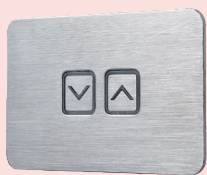
TFH4



TFH5



TFH6



TFH7



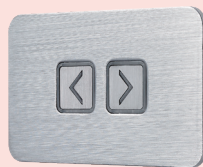
TFH7P



TFH7S



TFH11



TFH15



TFH15P

# Hand Controls



TFH16



TFH17



TFH22



TFH25



TFH27



TFH28



TFH32



TFH33



TFH34



TFH35



TFH36



# Accessories



TAM1  
Inflatable Massage  
Cushion System



TCR  
AC Cable Reel



TES  
External Switch



TFA1  
USB Chargers



TFA3  
USB Chargers



TJB2  
Junction Box





TJB10  
Junction Box



TMM  
Massage Motor



TMM2  
Massage Motor



TMM3  
Massage Motor



TMM4  
Massage Motor

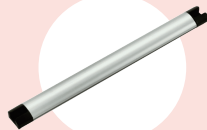


TRF  
RF Receiver

# Accessories



TRL1  
LED Reading Light



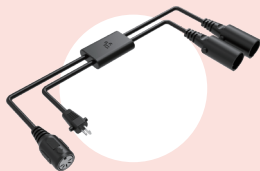
TSS  
Safety Strip



TYC  
Y Cable



TYC2  
Y Cable



TYC3  
Y Cable







**Taiwan & China**

+886 2 2219 6633  
sales.tw@timotion.com

**Australia**

+61 3 8725 0331  
salesteam.au@timotion.com

**Europe**

+33 (0)1 74 82 50 51  
sales.eu@timotion.com

**Japan**

+81 6 6713 1188  
sales.jp@timotion.com

**USA**

(704) 708 6924  
sales.us@timotion.com

**Korea**

+82 31 745 1060  
sales@timotion.co.kr



For the latest  
product information

**Updated: Apr 2024**